

Northern Health School Board of Trustees Annual Report



Associate Minister of Education Heather Roy visits the Northern Health School

(from left to right)
Richard Winder (Principal), Richard Abel (Board Chair), Heather Roy (Associate Minister of Education)

Institution Number 1210
Presented at the 2010 Annual Meeting

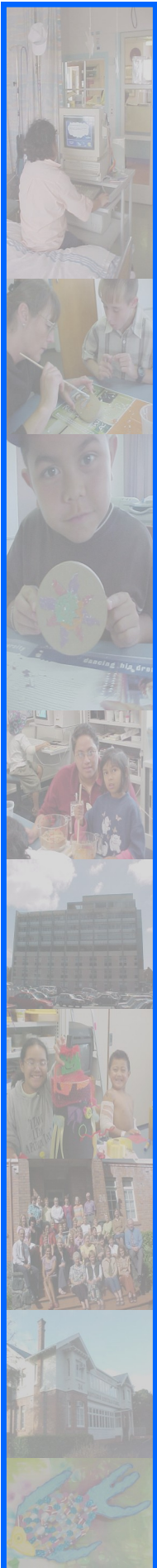
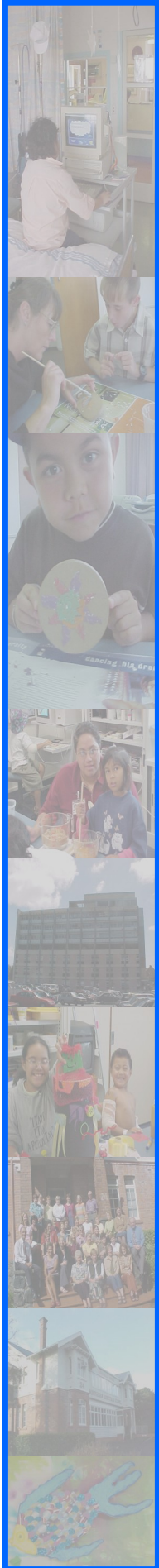


Table of Contents



	Page
Our School	3
Board Chairperson's Report	4
Principal's Report	5
Board and Staff	6
Variance Report	8
Audited Annual Accounts	11
• Statement of Responsibility	2
• Income Statement	3
• Statement of Changes in Equity	4
• Balance Sheet	5
• Notes to the Financial Statements	6
• Auditor's Report	

Our School

Northern Health School is one of three special state schools set up by the Ministry of Education to provide education support for students with high health needs. Our geographic region stretches from Ohakune to North Cape including New Plymouth and Gisborne and areas to the south of both cities.

Our service

Once a student is admitted to our roll, our teachers develop an ILP (Individual Learning Plan) in consultation with the student, the student's regular teacher, parents, medical personnel and any other relevant people.

Students remain on the roll of their regular school while receiving assistance from NHS personnel. In most cases we also assist students with transition back to school as their medical situation improves.

We work with students in hospital, in their homes and in our own student support centres based at our various units. During the student's transition back to school process, we will sometimes work with them in their regular classroom for short periods in association with their class teacher.

Eligibility

Students from years 1—13 who have been, or are expected to be, away from their regular school because of serious illness can receive support from Northern Health School teachers. If a student is not in hospital, their application for admission must be supported by a medical certificate from a registered medical practitioner.

Enquiries

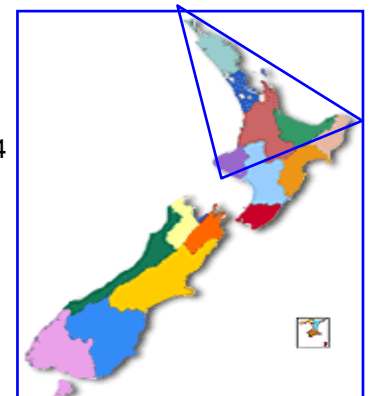
Our Auckland office can be contacted by telephone on 09 520 3531 or, if you are out of Auckland, on 0800 153 002. Our postal address is Private Bag 99 907, Newmarket, Auckland. Our email address is admin@nhs.school.nz Each of our units can be contacted by telephone as listed below.

Location

Our administrative base is located at Regional House, 24 Mountain Road, Epsom, Auckland and our principal and deputy principal work from offices there. Our school extends across 14 locations, with two units based in major hospitals, others on the sites of local schools and some in commercial premises leased by the Ministry of Education. Most of our units include a student support centre where teachers can work with individuals or groups.

We have staff located at

Whangarei	ph (09) 459 6068	
Wilson Centre, Auckland	ph (09) 489 6526	
Regional House, Auckland	ph (09) 520 3531 or 0800 153 002	
Starship Hospital, Auckland	ph (09) 309 7869	
Child and Family Unit at Starship, Auckland	ph (09) 307 4949	ext 6334
Youth Transitional Programme, Auckland	ph (09) 523 0544	
Ronald McDonald House, Auckland	ph (09) 303 1365	ext 866
Kidzfirst Hospital, Auckland	ph (09) 276 6598	
South Auckland Unit	ph (09) 520 4567	
Whitiora School, Hamilton	ph (07) 839 0516	
Rongo Atea Centre, Hamilton	ph (07) 839 0516	
Gate Pa School, Tauranga	ph (07) 578 2635	
Sunset Primary Rotorua	ph (07) 343 9921	
Taranaki Hospital, New Plymouth	ph (06) 753 6139	ext 7804
Kaiti School, Gisborne	ph (06) 868 9754	



Chairperson's Report



Chairperson's Report

For The Northern Health School, 2009 has been another most successful year. It has been a very busy one, with an ERO visit in Term 1, a continuing increase in our roll, with all the implications this carries with it in regard to staffing, accommodation, and delivery of service, and an on-going focus on evaluation of our practices with the view to improvement and continuing to stay an international leader in our field. All this, of course, while maintaining the high quality of programmes we offer to the many students who enrol with us.

The ERO report was an excellent one, and although it identified some areas for us to work on improvement in, it also was an affirmation of the quality of programmes we are providing for our students. During the review we requested that the team focus on the use we are making of the student support centres, and their positive comments confirmed the value of this development.

The Board is conscious of the special challenges presented by the distances separating the many components which together make up our school. During the year I was privileged to again visit each of the units. This not only ensured the staff were able to have direct contact with a Board representative, but also provided an opportunity for me as that representative to observe first hand the varied environments in which our staff work, and our students receive their education.

The overriding impression gained at every unit visited, and in talking with everyone associated with The Northern Health School, is the wonderful work that is being carried out by our amazingly dedicated and hard working staff. While educating young people has a commonality no matter what the environment in which it is being offered, there are a number of unique, and quite significant factors which make the work of our teachers very different from that faced by the vast majority of teachers. That there is such universal appreciation for the way in which our students are having their special circumstances accommodated while still being provided with meaningful and successful educational opportunities is a wonderful acknowledgement.

The latter stages of this year saw the Board involved in the important task of ensuring our Charter accurately reflected what we see ourselves as a school, and writing the Strategic Plan which will give the school direction over the next few years. The final document takes account of the contribution of all those consulted, and ensures we continue to do well the things we are already doing well while constantly looking to improve and refine what we are offering our students to give them the very best opportunities possible.

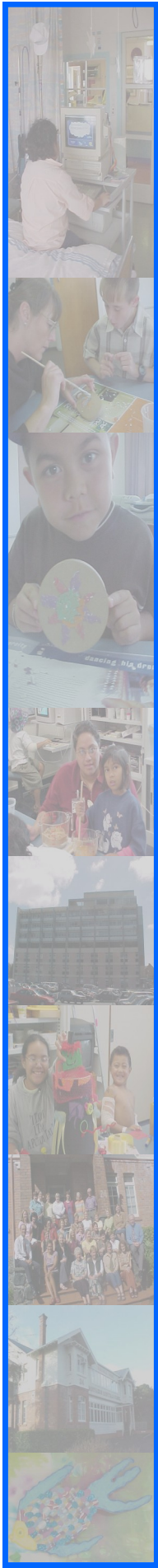
As a Board we are proud of our school, and the contribution we make to its effectiveness. We move in to a new year, with triennial elections providing an opportunity for others to take a place on the Board, confident that the future will see The Northern Health School continue to grow from strength to strength.

Richard L. Abel
Chairperson



Board Chairperson
Richard Abel

Principal's Report



2009 has been a year marked by roll growth, careful staffing management, change and innovation and consolidation.

Roll growth has been steady across the whole school, but especially strong in the Bay of Plenty region. It is pleasing to see that the hard work done by Health School staff at the local level in raising the profile of the school has paid off. Roll growth in our context generally means that we are getting better at identifying students who are entitled to our service and that the wider education and health community is becoming more active in referring.

In the case of the Bay of Plenty this means that population growth in the region is reflected in our roll as it should be. In addressing this growth, towards the end of 2009, as a trial, the Board appointed a new staff member based in Whakatane. Roll numbers in the area have continued to grow and this position has been extended into 2010.

Roll growth has exacerbated the existing accommodation issues in both Rotorua and Tauranga. Following the development by the Ministry of a set of Special Schools' property guidelines, attempts have been made to upgrade these units. The lack of progress in this area means that the full range of Health School services is still not available to all of our students, which is a concern for the Board. I am hopeful however that 2010 will see a final resolution.

2009 has seen the continuation of the innovative projects underway for the last few years. This has included an increase in the number of students working through our LIVE online system as well as the full introduction of the eTAP student management system. While this last achievement has been some time coming, it has proved to be a very positive step in terms of meeting the planning and reporting needs of the school.

The school is ably supported by its Board who continue to see that the school is well resourced and this is much appreciated. I would like to thank the Board for their support and the staff for their efforts and dedication.

The Board are proactive in ensuring staff have access to the best professional development available. Through collaboration with the other health schools and research, both overseas and locally, they ensure that the school is in a position to demonstrate internationally benchmarked good practice. An international cluster meeting in Perth offered an opportunity for school administrators from Manchester, Western Australia and New Zealand, working in similar ways to collaborate and share skills, experiences and ideas. New Zealand Health Schools I believe, rate exceptionally well internationally due to a combination of forward thinking at the time of the schools' establishment, and the hard work of successive Boards and staff.

The Education Review Office conducted a review of the school in 2009, looking particularly at curriculum delivery and the effectiveness of student support centres. The result was a very positive review of which the Board and staff can be justifiably proud.

I am proud to be associated with such a strong team of educators and governors who continually strive to support students who have chronic health difficulties. Positive feedback from both our satisfaction surveys and from ERO along with continued roll growth, show how much our service is valued.

Richard Winder
Principal



NHS Principal
Richard Winder

Board and Staff

Board of Trustees Members 2009

Position	Name of Trustee	Status	Term expires	Occupation
Chairperson	Richard Abel P.O. Box 4373 Kamo Whangarei	Ministerial Appointment	May 2010	Educational Consultant
BOT Member	Richard Winder	Principal	Ongoing	Northern Health School
BOT Member	Heather Moore	Ministerial Appointment	May 2010	Accademic manager
BOT Member	Sue Allen	Ministerial Appointment	May 2010	Lecturer
BOT Member	Maxine Moana-Tuwhanagai	Ministerial Appointment	May 2010	Accountant
BOT Member	Jerome Cudmore	Ministerial Appointment	May 2010	Manager
BOT Member	Jillian Holland	Staff Appointed	May 2010	Teacher
BOT Member	Michael Stowers	Co-opted	May 2010	Accountant



Richard Abel
Chairperson

Richard Winder
Principal

Sue Allen
Trustee

Jillian Holland
Staff Trustee



Heather Moore
Trustee

**Maxine
Moana-Tuwhanagai**
Trustee

Jerome Cudmore
Trustee

Michael Stowers
Trustee

Staff Members 2009

the education link



Name	Position	Location	Tenure
Richard Winder	Principal	Regional House	Permanent
Kerry Watkins	Deputy Principal	Regional House	Permanent
Support Staff			
Jan Carlson	Bursar	Regional House	Permanent
Raewyn Gibbs	Roll Administrator	Regional House	Permanent
Christine MacKenzie	Admin Assistant	Regional House	Permanent
Lynda Lindsay	Admin Assistant	Regional House	Permanent
Jocelyn Eaddy	Admin Asst/T. Aide	Ronald McDonald House	Permanent
Karen Brumfit	Admin Asst/T. Aide	Starship	Permanent
Sarah Beattie	Admin Asst/T. Aide	Starship	Permanent
Jenny Chapman	Admin Asst/T. Aide	Starship	Permanent
Mary O'Carroll	Admin Asst/T. Aide	South Auckland Unit	Permanent
Carmel Jesney	Admin Asst/T. Aide	Waikato	Permanent
Louise O'Hagan	Admin Asst/T. Aide	Northland	Permanent
Glenys Budd	Admin Asst/T. Aide	Wilson Unit	Permanent
Janene Ardern	Admin Asst/T. Aide	Rotorua	Permanent
April Leng	Admin Asst/T. Aide	Taranaki	Permanent
Daria Spence	Admin Asst/T. Aide	Child & Family Unit	Permanent
Heather Spalding	Admin Asst/T. Aide	Tauranga	Permanent
Jackie Haywood	Admin Asst/T. Aide	Whakatane	Permanent
Julia Haywood	T. Aide/ORRS	Regional House	Fixed Term
Wilson Unit			
Lynn Godfrey	Teacher	Wilson Unit	Permanent
CES			
Joanne Anderson	Senior Teacher	Regional House	Permanent
Ann Tucker	Teacher	Regional House	Permanent
Kiri Fitt / Anne Corbett	Teacher	Regional House	Permanent
Jillian Holland	Teacher	Regional House	Permanent
Sharon Holderness	Teacher	Regional House	Permanent
Jane Marsden	Teacher	Regional House	Permanent
Starship			
Cushla Brown	Senior Teacher	Starship	Permanent
Barbara Cooper	Teacher	Starship	Permanent
Rosemary Gormack	Teacher	Starship	Permanent
Jan Melbourne	Teacher	Starship	Permanent
Marion Nevin	Teacher	Ronald McDonald House	Permanent
Lesley Gardner	Teacher	Starship	Permanent
Robin Wall	Teacher	Starship	Long Term Reliever
Child & Family Unit			
Gaynor Brown	Teacher	Child & Family Unit	Permanent
Anne Wilson	Teacher	Child & Family Unit	Long Term Reliever
Youth Transitional Programme			
Noel Sadgrove	Teacher	YTP	Permanent
South Auckland Unit			
Eileen Horsman	Associate Principal	South Auckland Unit	Permanent
Estelle Hunter	Teacher	South Auckland Unit	Permanent
Joyce Martin	Teacher	South Auckland Unit	Permanent
Dawn Hancock	Teacher	South Auckland Unit	Permanent
Northland			
Maggie Wilkinson	Teacher	Whangarei	Permanent
Jenny Sergeant	Teacher	Whangarei	Permanent
Guy Muller	Teacher	Whangarei	Fixed Term
Waikato			
Diane Batey	Senior Teacher	Waikato	Permanent
Sue McLeish	Teacher	Waikato	Permanent
Michelle Hamilton	Teacher	Waikato	Permanent
Michael McGuire	Teacher	Waikato	Long Term Reliever
Tauranga			
Shona Robinson	Teacher	Tauranga	Permanent
Robyn Miekle	Teacher	Tauranga	Permanent
Taranaki			
Viv Clarke	Teacher	Taranaki	Permanent
Laura Webster Kumeroa	Teacher	Taranaki	Fixed Term
Rotorua			
Mary Carroll-Jones	Teacher	Rotorua	Permanent
Gaye Donovan	Teacher	Waikato	Long Term Reliever
Gisborne			
Judy Taylor	Teacher	Gisborne	Permanent

Variance Report

Analysis of Variance

For the year ended 31 December 2009

Mission and Vision

The Board of Northern Health School continues to focus on strategic goals linked to our Mission Statement and Vision.

Mission Statement

To promote and support the education of students with high health needs by providing individually designed learning programmes in a variety of settings.

Vision

To be nationally and internationally acknowledged for the development of innovative education programmes for students with high health needs.

Cultural

The Board has actively sought to increase its range of representation and skills and as a result, co-opted a new member in 2009, with a Pasifika background and specific skills in the area of accounting. The Board has been unable to recruit any additional Maori or Pasifika teaching staff.

Curriculum

Student Achievement

Monitoring of student achievement based on analysis of ILP goals in literacy and numeracy continues. The development of a more comprehensive curriculum analysis tool through the school's database has proceeded slowly and is expected to be completed early in 2010. This should give the school the ability to give more in depth analysis of student achievement trends.

On Line Learning

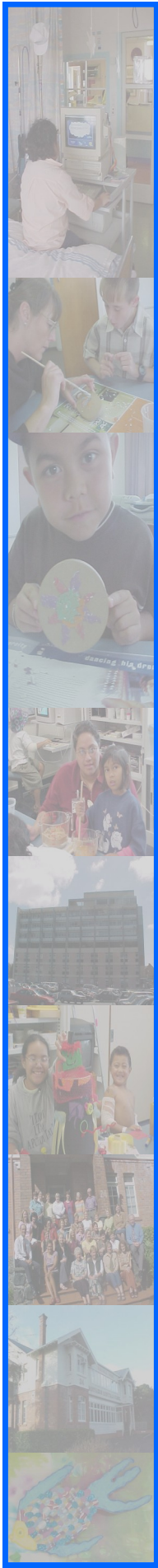
Our on-line support programme (LIVE) has continued to grow across the school with up to 25 students being supported in this way during 2009. The system is also being used to bring students into our support centres, virtually, so that they can become part of a small group of similar students. Both these initiatives are being extended in 2010.

Client Surveys

Client surveys have continued in 2009. With the high turnover of students it was decided to continue to send them to a random sample of students, their parents and their schools of enrolment. The survey response rate of 25% met the Board's target of 25% and is an increase from the previous year. In 2009, 95% of survey respondents reported satisfaction levels of **good** or **excellent** with the majority in the excellent category. In the few cases where satisfaction levels were poor, particularly with regard to schools of enrolment, investigation revealed that in most cases the student had spent a short period in hospital acutely ill and then returned to school immediately after discharge. In other instances, the person filling in the form was not the teacher working with the student and had not been involved in the communication and ILP development for the student.

Student Management Systems.

The Board has met its objective of implementing the eTap student management system during 2009.



Curriculum Reporting

The Board receives regular reports of student progress in terms of outcomes from individual planning for students. Reporting continues to include separate NCEA reporting.

The school uses this and other information to inform and change practice, with the aim of delivering the best possible outcomes for students.

Administration

Combined Health Schools Conference/Seminar

A seminar hosted by The Southern Regional Health School took place on 25 July 2009 with Board and staff representatives of the three regional health schools in attendance. This vehicle again delivered a valuable opportunity for shared strategic planning and discussion. Three key areas were identified and one allocated to each school for development during the following year: compulsion regarding Health School admissions (NHS), the special education review planned for 2010 (SRHS) and promoting our service to stakeholders (CRHS).

New Website

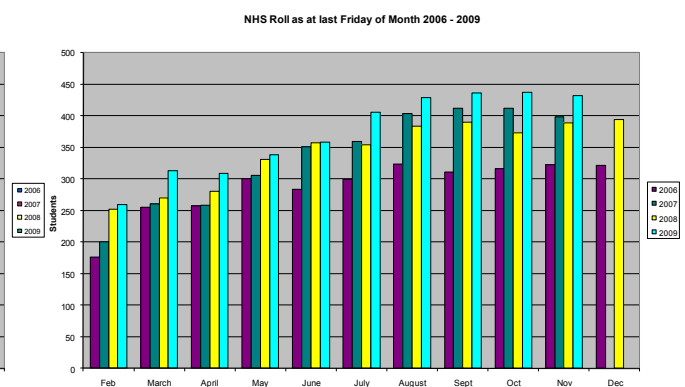
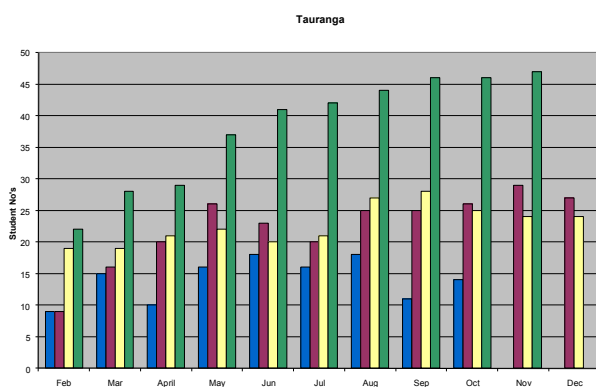
The development of this has been much slower than anticipated but is expected to be in place early in 2010 and will provide a more professional and easily navigated on-line access for the school.

Video Conferencing

Video conferencing technology continues to be extensively used with regular conferencing taking place between Regional House, NHS Waikato and Southern Regional Health School as well as one-off conferences with other institutions. Board meetings using video conferencing continue to provide cost and time effective forums.

Staffing

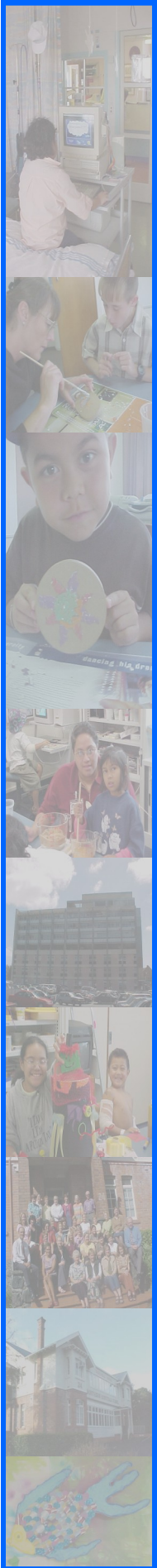
The lack of a mechanism for increasing the school's notional roll in response to increased student numbers continues to make staffing decisions difficult. Discussions with the Ministry regarding this issue have been positive but, as yet, have not resulted in any changes. Following slower growth in roll numbers in 2008, the roll has increased greatly in 2009. With careful use of banked staffing and funds budgeted for the purpose this situation was managed but continued growth will make this difficult in 2010.



Staffing continues to be stable with few permanent teachers leaving in 2009. Advertised vacancies have been highly sought after.

Roll

Student numbers continued to increase over the previous year and the Bay of Plenty region has been identified as an area of rapid growth. It is hoped that the employment of a teacher in Whakatane will help alleviate the pressure in this area.



Finance and Property

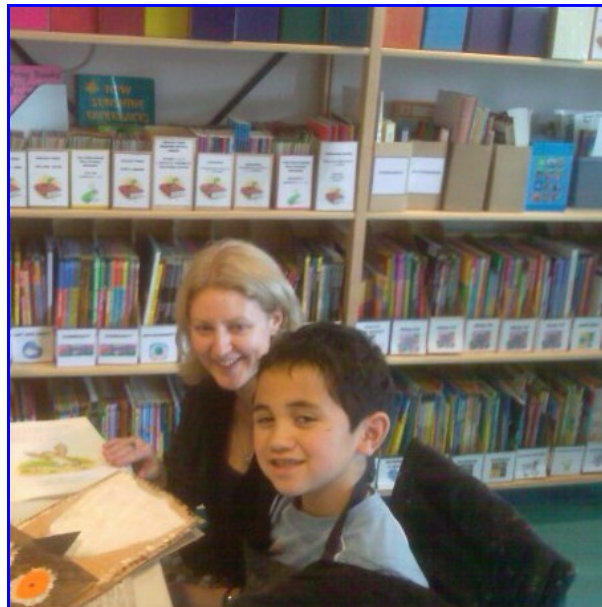
Draft Guidelines

The Board was successful in getting information about Health Schools included in the Special School Property Guidelines, however this has not transferred into any action in areas of property concern. Dialogue with the other special schools and especially with BLENZ and KDEC has been beneficial and the Board hopes to be able to work collaboratively with them in this area.

Tauranga Unit

The Board set the resolving of property issues at Tauranga as a priority for 2009. Some progress was made, particularly with the co-operation of Tauranga Girls' High School regarding access, but the situation continues to be unsatisfactory despite our inclusion in the property guidelines. Tauranga Unit upgrading continues to be a Board priority.

Audited Annual Accounts



Heather Roy (Associate Minister of Education) and Sam during her visit to the school classroom at Ronald McDonald House.